

You can walk around this garden to get a full view of the butterfly activity going on. Drifts of colors provide food and cover for butterflies Spring through Fall.

The mud pan provides a place for moths and butterflies to get necessary water and minerals.

Butterfly Milkweed and Swamp Milkweed are sure to attract monarch butterflies to your yard. If you look close, you may find their caterpillars.

#### PLANT LIST

SYMBOL	QTY	SCIENTIFIC NAME	COMMON NAME	COLOR	BLOOM PERIOD	HEIGHT	USE	NOTES
AM	6	<i>Achillea millefolium</i>	Yarrow	White	Jul-Aug	1-2'	N	Native
AT	3	<i>Amsonia tabernaemontana</i>	Blue star	Light blue	May-Jun	2-3'	N	Non-native
AQ	4	<i>Aquilegia canadensis</i>	Columbine	Red/Yellow	May-Jul	2-3'	LH, B	Native
AI	7	<i>Asclepias incarnata</i>	Swamp milkweed	Pink	Jul-Aug	3-4'	LH, N	Native
BW	5	<i>Asclepias tuberosa</i>	Butterfly milkweed	Orange	Jun-Jul	1.5-2'	LH, N	Native
CX	3	<i>Caryopteris x clandonensis</i>	Bluebeard, Blue Mist	Blue	Aug-Sep	2-3'	N	Non-native
CL	5	<i>Coreopsis lanceolata</i>	Sand coreopsis	Yellow	Jun-Aug	12-24"	B, LB	Native
CV	5	<i>Coreopsis verticillata</i> 'Moonbeam'	Moonbeam Coreopsis	Yellow	Jun-Aug	1.5-2'	N	Non-native
FV	30	<i>Fragaria virginiana</i>	Wild strawberry	White	Apr-May	6"		Native
HH	4	<i>Heliopsis helianthoides</i>	False sunflower	Yellow	Jul-Sep	4-6'		Native
MF	3	<i>Monarda fistulosa</i>	Wild bergamot	Lavender	Jul-Aug	2-4'	N	Native
MP	5	<i>Monarda punctata</i>	Horsemint	Yellow	Jul-Sep	1-3'	N	Native
PD	5	<i>Penstemon digitalis</i>	Foxglove beardtongue	White	Jun-Jul	3-4'	B	Native
PP	7	<i>Phlox pilosa</i>	Prairie phlox	Pink	May-Jul	24"	N	Native
RF	3	<i>Rudbeckia fulgida</i>	Orange Coneflower	Yellow	Aug-Oct	2-3'	N	Native
SN	4	<i>Salvia nemorosa</i>	Meadow Sage	Blue, purple	May-Jul	1-2'	N	Non-native
ST	3	<i>Silphium terebinthinaceum</i>	Prairie dock	Yellow	Aug-Oct	36"-8'	N, B	Native
SS	3	<i>Solidago speciosa</i>	Showy goldenrod	Yellow	Aug-Oct	2-5'	N, PP	Native
SL	4	<i>Symphotrichum laeve</i>	Smooth Aster	Lavender	Aug-Oct	2-4'	N	Native
MS	5	<i>Tithonia diversifolia/rotundifolia</i>	Mexican sunflower	Orange	Jul-Sep	4-6'	N	Non-native, annual
TO	3	<i>Tradescantia ohiensis</i>	Spiderwort	Blue	May-Jul	2-3'	PP, N	Native

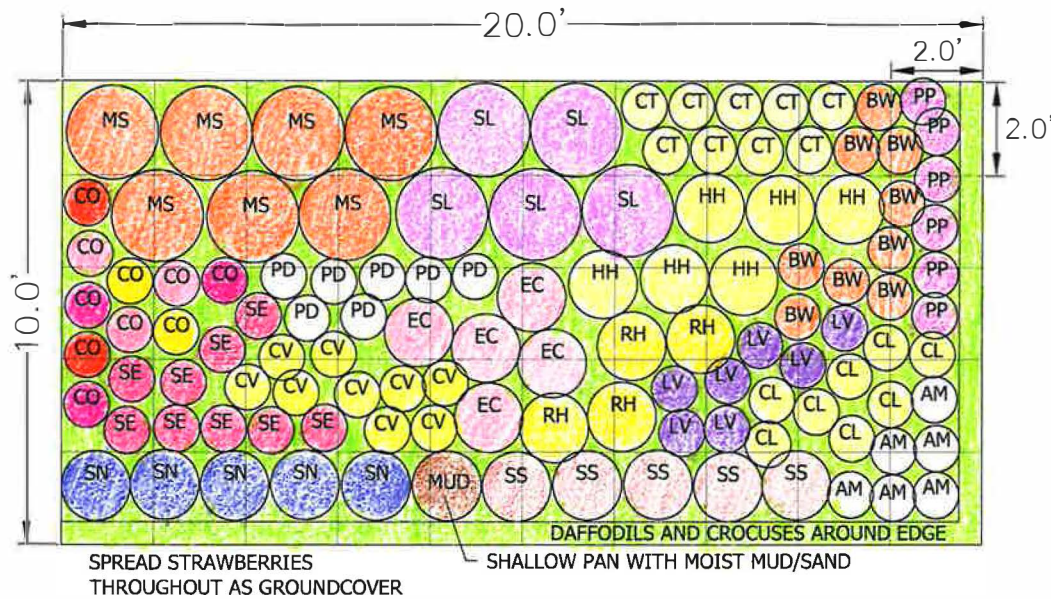
B: Birds eat the seeds  
 LH: Larval host for certain butterfly species  
 N: Provides nectar for butterflies  
 PP: Attracts pollinators or predatory insects

PROJECT: BUTTERFLY GARDENS  
 SOIL MOISTURE: AVERAGE TO SOMEWHAT DRY  
 SUNLIGHT: FULL SUN



SCALE: 1" = 4'





This garden gets taller in the back, so you can place it against a fence or wall with southern exposure. Dry conditions won't harm these plants, once you get them established.

Butterflies, birds and bees will all find plenty to feed on in this garden, and you will have color from spring to fall, and interesting structure to collect snow in the winter.

### PLANT LIST

SYMBOL	QTY	SCIENTIFIC NAME	COMMON NAME	COLOR	BLOOM PERIOD	HEIGHT	USE	NOTES
AM	6	<i>Achillea millefolium</i>	Yarrow	White	Jul-Aug	1-2'	N	Native
BW	9	<i>Asclepias tuberosa</i>	Butterfly milkweed	Orange	Jun-Jul	2-3'	LH, N	Native
CL	8	<i>Coreopsis lanceolata</i>	Sand coreopsis	Yellow	Jun-Aug	12-24"	B, LB	Native
CT	9	<i>Coreopsis tripteris</i>	Tall tickseed	Yellow	Jul-Aug	4-10'	N	Native
CV	9	<i>Coreopsis verticillata</i> 'Moonbeam'	Moonbeam Coreopsis	Yellow	Jun-Aug	1.5-2'	N	Non-native
CO	10	<i>Cosmos sulphureus</i>	Cosmos	Multiple	Summer	2.5-5'	N	Non-native
EC	5	<i>Echinacea purpurea</i>	Purple Coneflower	Purple	Jun-Aug	3-4'	N	Native
FV	30	<i>Fragaria virginiana</i>	Wild strawberry	White	Apr-May	6"	N	Native
HH	6	<i>Heliopsis helianthoides</i>	False sunflower	Yellow	Jul-Sep	4-6'	N	Native
LV	7	<i>Lavandula angustifolia</i> 'Hidcote'	Hidcote lavender	Purple	Summer	12"-18"	N	Non-native
PD	7	<i>Penstemon digitalis</i>	Foxglove beardtongue	White	Jun-Jul	3-4'	B	Native
PP	6	<i>Phlox pilosa</i>	Prairie phlox	Pink	May-Jul	24"	N	Native
RH	4	<i>Rudbeckia hirta</i>	Black-eyed Susan	Yellow	Jun-Sep	1-3'	LH, N, LB	Native
SN	5	<i>Salvia nemorosa</i>	Meadow Sage	Blue, purple	May-Jul	1-2'	N	Non-native
SS	5	<i>Schizachyrium scoparium</i>	Little bluestem	Green	Aug	2-4'	LH	Native
SE	9	<i>Sedum 'Herbstfreude'</i>	Autumn Joy stonecrop	Pink	Aug-Oct	2'	N	Non-native
SL	5	<i>Symphotrichum laeve</i>	Smooth Aster	Lavender	Aug-Oct	2-4'	N	Native
MS	7	<i>Tithonia diversifolia/rotundifolia</i>	Mexican sunflower	Orange	Jul-Sep	4-6'	N	Non-native, annual

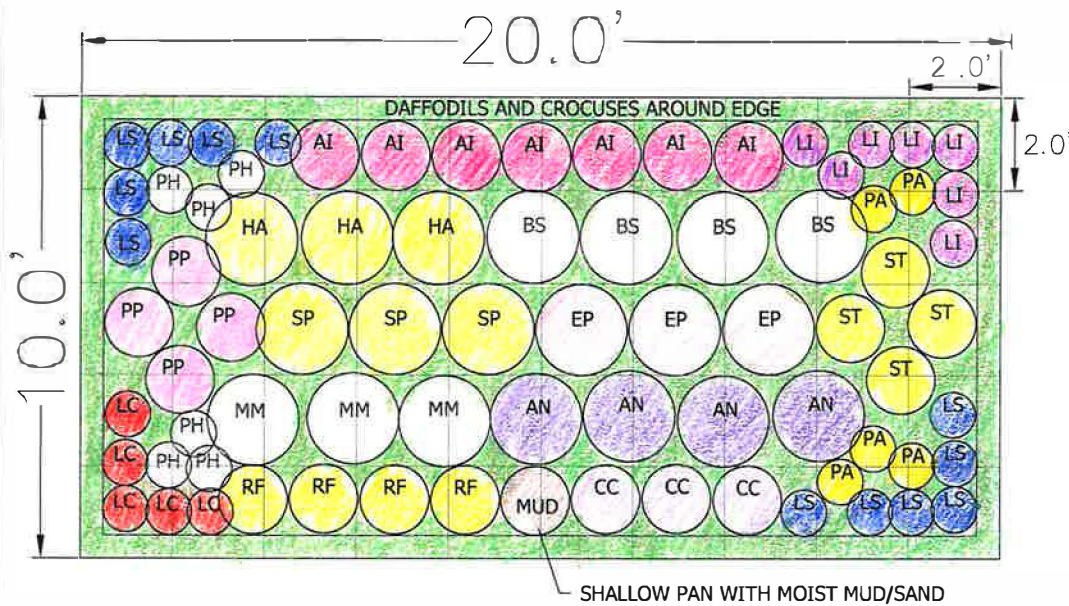
B: Birds eat the seeds  
 LH: Larval host for certain butterfly species  
 N: Provides nectar for butterflies

PROJECT: BUTTERFLY GARDENS  
 SOIL MOISTURE: DRY  
 SUNLIGHT: FULL SUN



SCALE: 1" = 4'





You can walk around this garden to get a full view of the butterfly activity going on. The larger plants are in the center, so you get a rising crescendo of color no matter how you look at it.

The mud pan provides a place for moths and butterflies to get necessary water and minerals.

From blazing stars to milkweed to Joe Pye Weed, you're sure to find something going on, spring to fall.

#### PLANT LIST

SYMBOL	QTY	SCIENTIFIC NAME	COMMON NAME	COLOR	BLOOM PERIOD	HEIGHT	USE	NOTES
AI	7	<i>Asclepias incarnata</i>	Swamp milkweed	Pink	Jul-Aug	3-4'	LH, N	Native
AN	3	<i>Aster novae-angliae</i>	New England Aster	Purple	Aug-Sep	3-6'	LH	Native
CC	3	<i>Conoclinium coelestinum</i>	Blue Mistflower	Blue	Aug-Oct	1.5-3	N	Non-Native
BS	4	<i>Eupatorium perfoliatum</i>	Boneset	White	Jul-Sep	4-6'	N	Native
EP	3	<i>Eupatorium purpureum</i>	Joe-Pye Weed	Pink	Jul-Sep	4-6'	N	Native
HA	3	<i>Heleneum autumnale</i>	Sneezeweed	Yellow	Aug-Oct	3-5'	N	Native
LI	7	<i>Liatris spicata 'Kobold'</i>	Marsh Blazing Star	Pink	Jul-Aug	3-4'	N	Native
LC	5	<i>Lobelia cardinalis</i>	Cardinal flower	Red	Jul-Aug	2-4'	B	Native
LS	6	<i>Lobelia siphilitica</i>	Blue lobelia	Blue	Jul-Sep	1-3'	PP	Native
PA	5	<i>Packera aureus</i>	Golden ragwort	Yellow	May-Jun	1-2'	N	Native
PH	6	<i>Penstemon digitalis</i>	Foxglove beardtongue	White	Jun-Jul	3-4'	B	Native
PP	4	<i>Phlox paniculata 'Jeana'</i>	Jeana Phlox	Pink	Summer	4-5'	N	Non-native
MM	3	<i>Pycnanthemum virginianum</i>	Mountain mint	White	Jul-Sep	2-4'	N	Native
RF	5	<i>Rudbeckia fulgida</i>	Orange Coneflower	Yellow	Aug-Oct	2-3'	N	Native
SP	3	<i>Silphium perfoliatum</i>	Cupplant	Yellow	Jul-Sep	4-7'	B, PP	Native
ST	4	<i>Silphium terebinthinaceum</i>	Prairie dock	Yellow	Aug-Oct	36"-8'	N, B	Native

B: Birds eat the seeds  
 LH: Larval host for certain butterfly species  
 N: Provides nectar for butterflies  
 PP: Attracts pollinators or predatory insects

PROJECT: BUTTERFLY GARDENS  
 SOIL MOISTURE: MOIST (NOT STANDING WATER)  
 SUNLIGHT: FULL SUN



SCALE: 1" = 4'

